

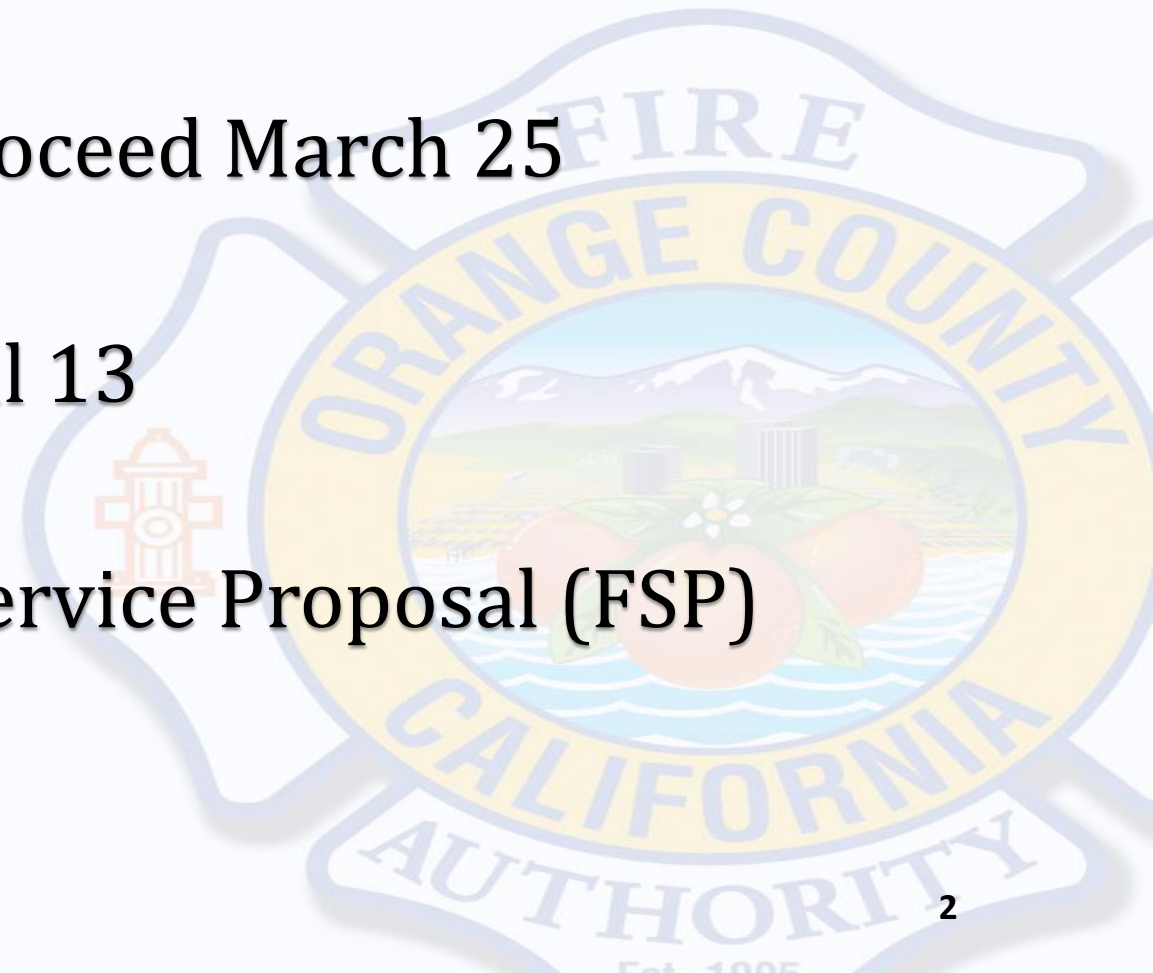
A photograph of the Orange County Fire Authority building with a bronze statue of firefighters in the foreground. The statue depicts two firefighters, one standing and one kneeling, with a fire hydrant in the center. The building has large windows and the words "ORANGE COUNTY FIRE AUTHORITY" are visible on its facade. Palm trees are scattered around the building under a clear blue sky.

OCFA Fire Services Proposal to Fullerton City Council

January 18, 2022

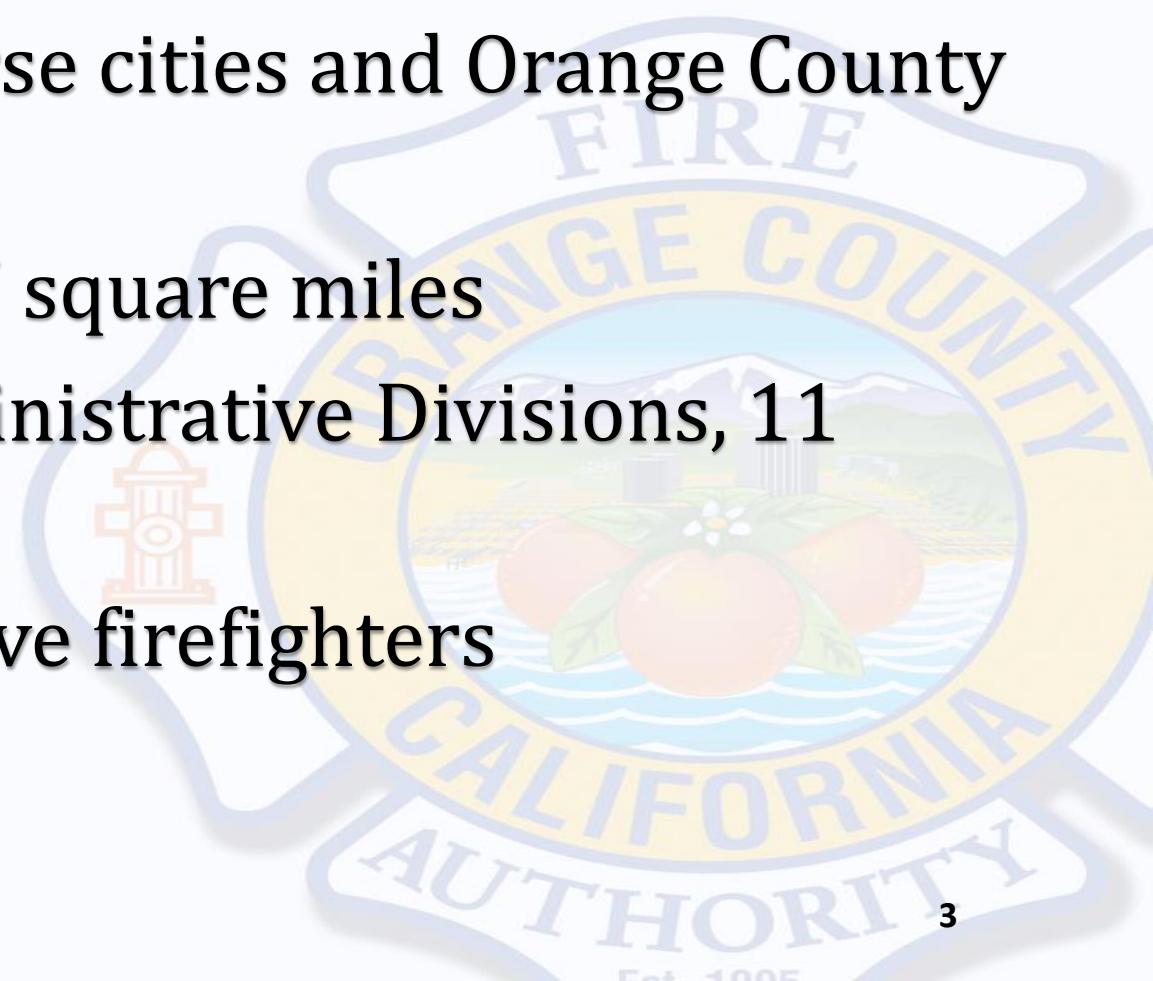
Proposal History

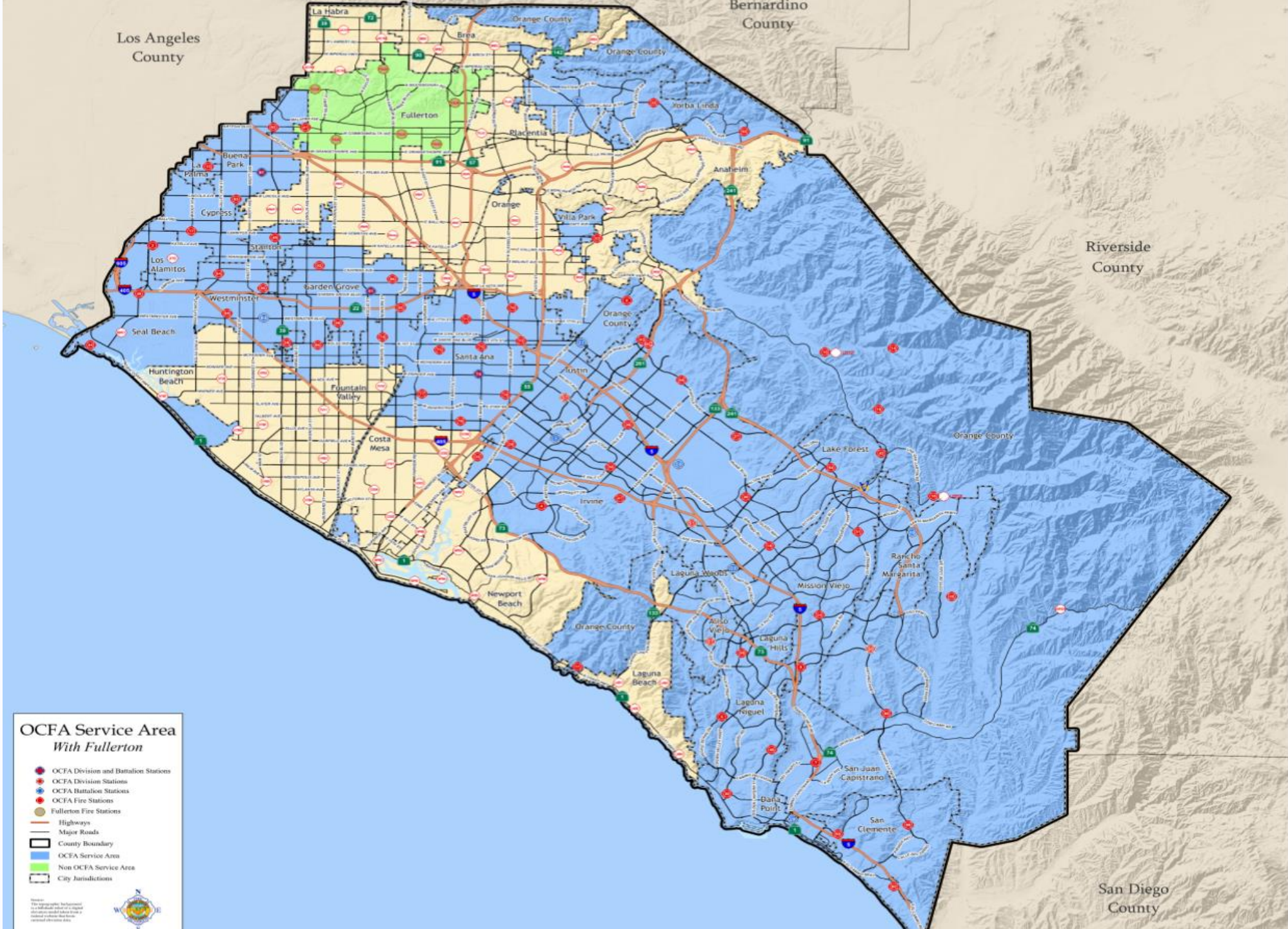
- OCFA received request for proposal March 3
- OCFA Board approved Staff to proceed March 25
- First meeting with City staff April 13
- OCFA Board approved the Fire Service Proposal (FSP)
October 28



The OCFA

- Fiscally Strong Organization
- Serves 23 demographically diverse cities and Orange County unincorporated areas
- Serves 2 million residents in 587 square miles
- 7 Geographical Divisions, 2 Administrative Divisions, 11 Battalions and 77 Fire Stations
- 1,152 Firefighters and 162 reserve firefighters
- 341 non-safety personnel





**OCFA Service Area
With Fullerton**

- OCFA Division and Battalion Stations
- OCFA Division Stations
- OCFA Battalion Stations
- OCFA Fire Stations
- Fullerton Fire Stations
- Highways
- Major Roads
- County Boundary
- OCFA Service Area
- Non OCFA Service Area
- City Jurisdictions



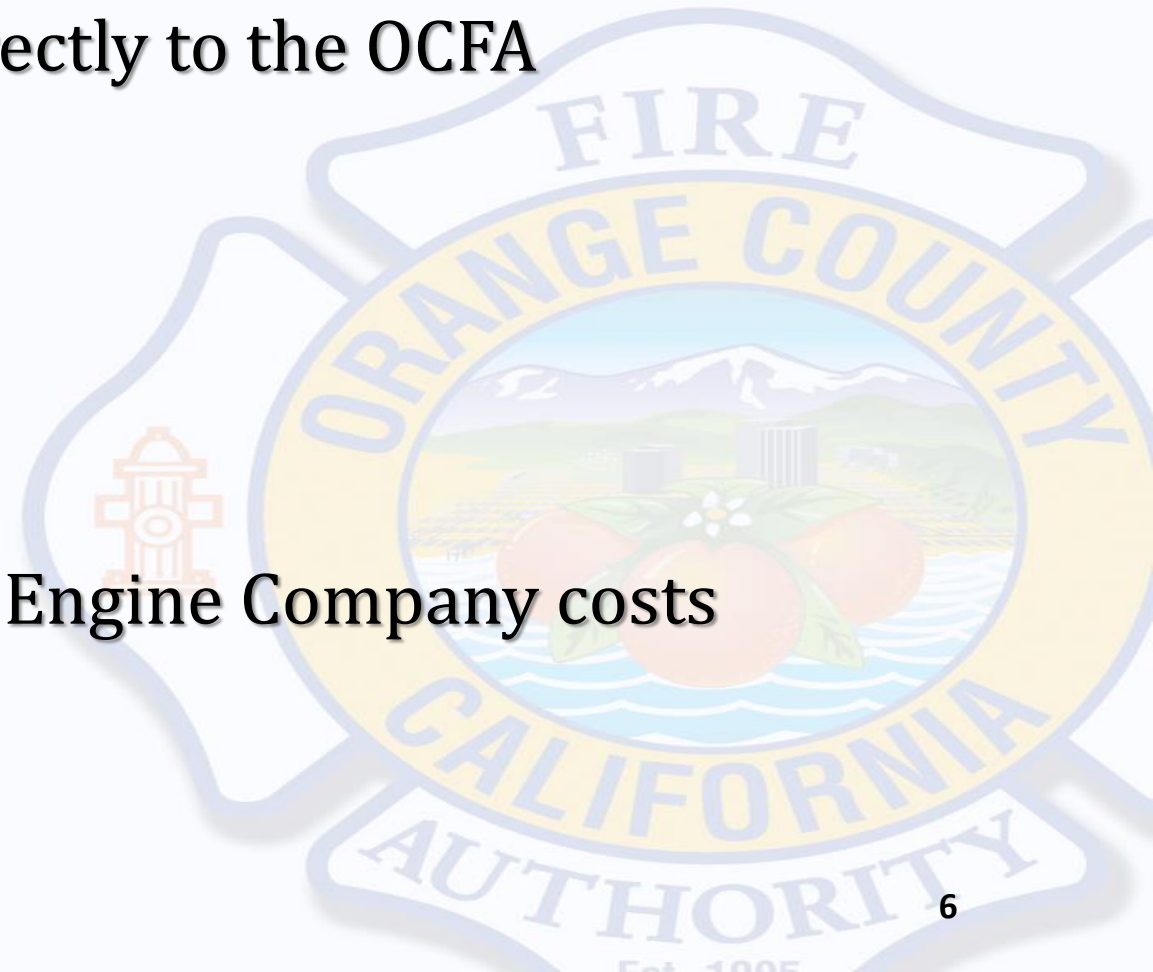
Governance

- Board of Directors
 - One council member from each city
 - Two members from OC Board of Supervisors
- Executive Committee
- Budget and Finance Committee
- Human Resources Committee
- City Managers' Technical Advisory Committee
- City Managers' Budget and Finance Committee



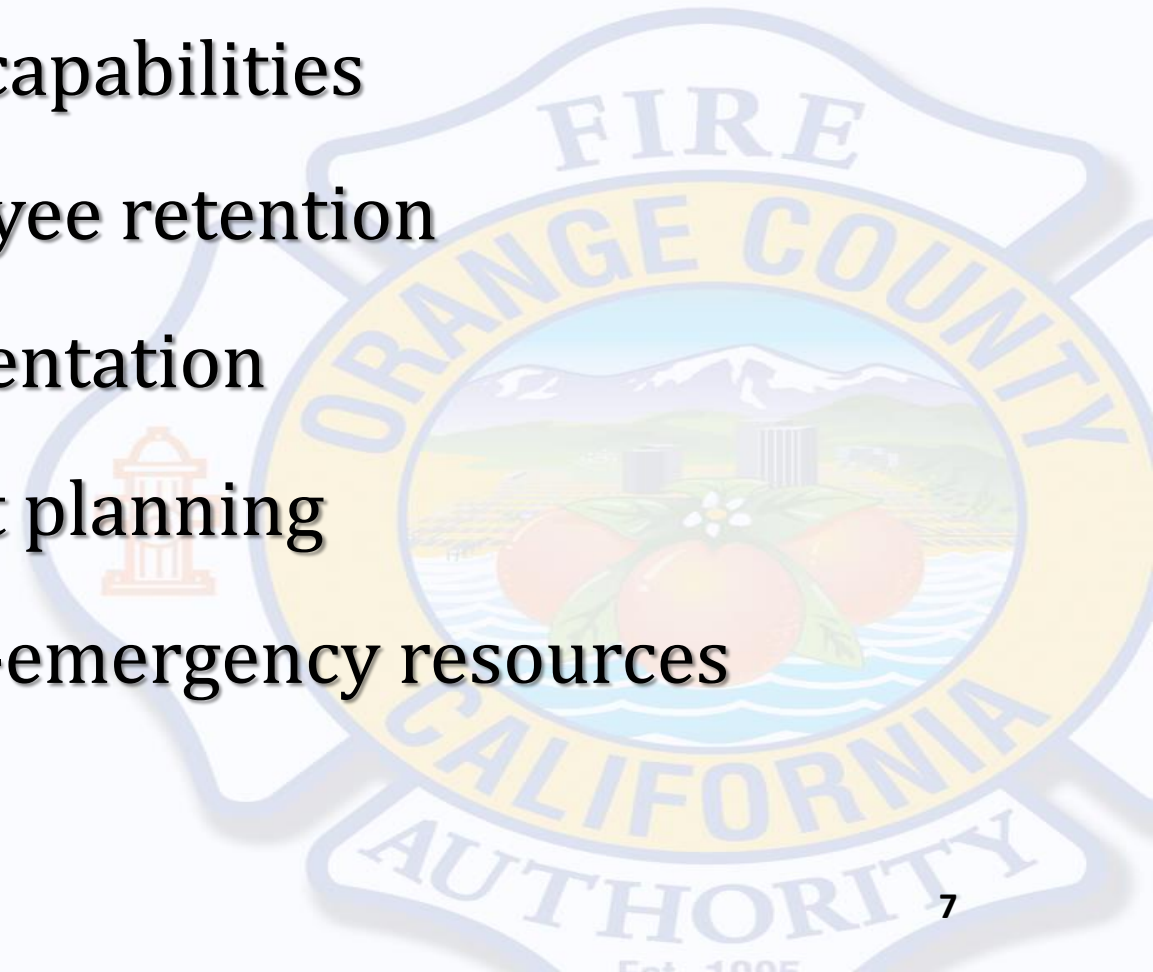
Types of City Membership

- Structural Fire Fund Members (16)
 - Funded through property taxes directly to the OCFA
- Cash Contract Cities (8)
 - Had previous fire department
 - Funded by individual cities
 - Contract costs based on Truck and Engine Company costs



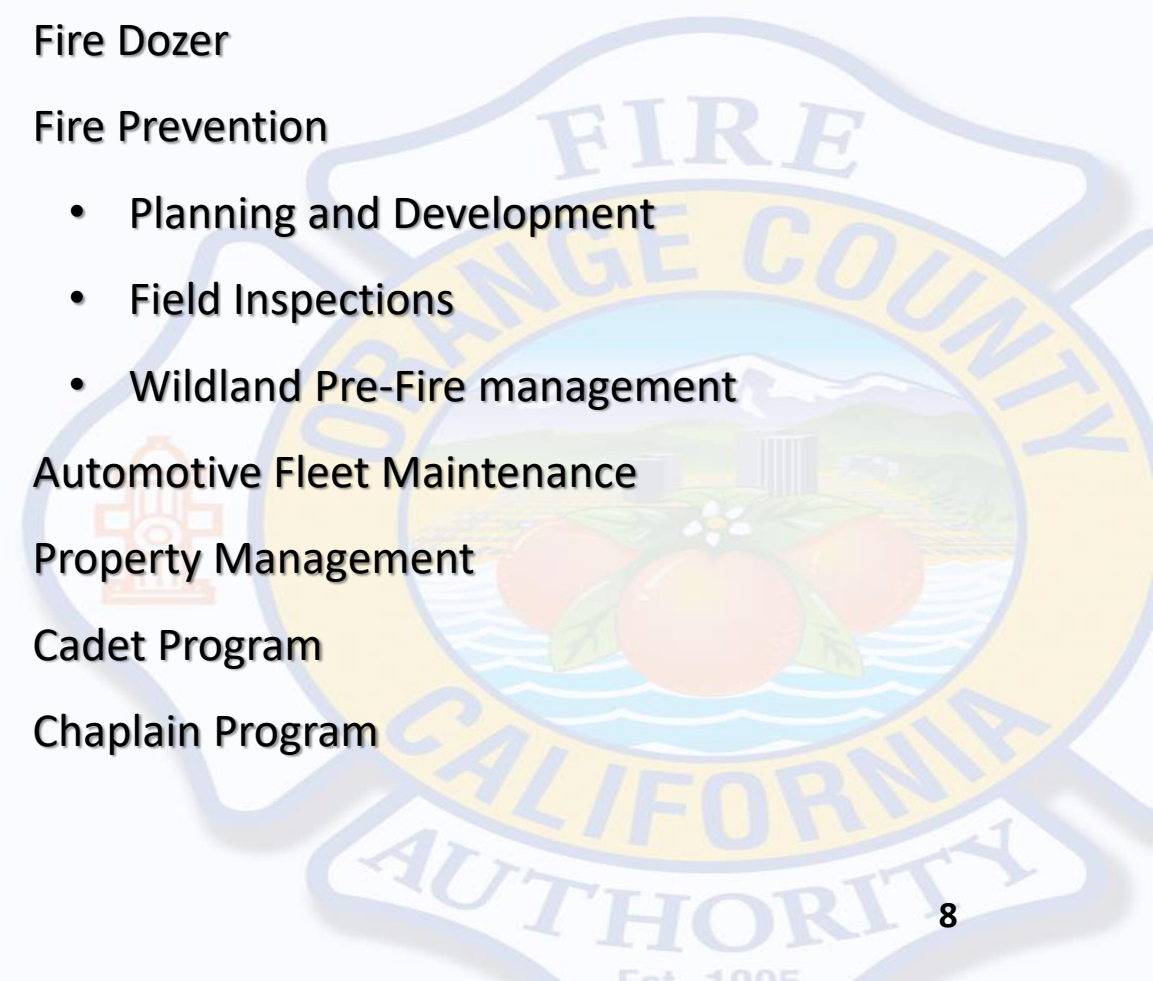
Benefits to Fullerton

- Reduced cost for fire service in City
- Increase in Paramedic response capabilities
- Recruitment, training and employee retention
- Command staff with local representation
- Vehicle rotation and replacement planning
- Use of OCFA emergency and non-emergency resources



Services Provided to Fullerton

- Hazardous Materials Response
- Urban Search and Rescue
- Swiftwater/Water Rescue
- Fire Investigations
- Emergency Dispatch
- Dedicated Training Section
 - State Accredited Fire Academy
- Human Resources
 - Recruitment, Promotion, Employee Relations
- Purchasing
- Community Educators
- Air Operations
- Wildland Handcrew
- Fire Dozer
- Fire Prevention
 - Planning and Development
 - Field Inspections
 - Wildland Pre-Fire management
- Automotive Fleet Maintenance
- Property Management
- Cadet Program
- Chaplain Program




City Jurisdiction Fullerton

- OCFA Division and Battalion Stations
- OCFA Division Stations
- OCFA Battalion Stations
- OCFA Fire Stations
- Fullerton Fire Stations

- Highways
- Major Roads
- County Boundary
- OCFA Service Area
- Non OCFA Service Area
- City of Fullerton

Source:
The topographic background is a hillshade relief of a digital elevation model taken from a federal website that hosts national elevation data.

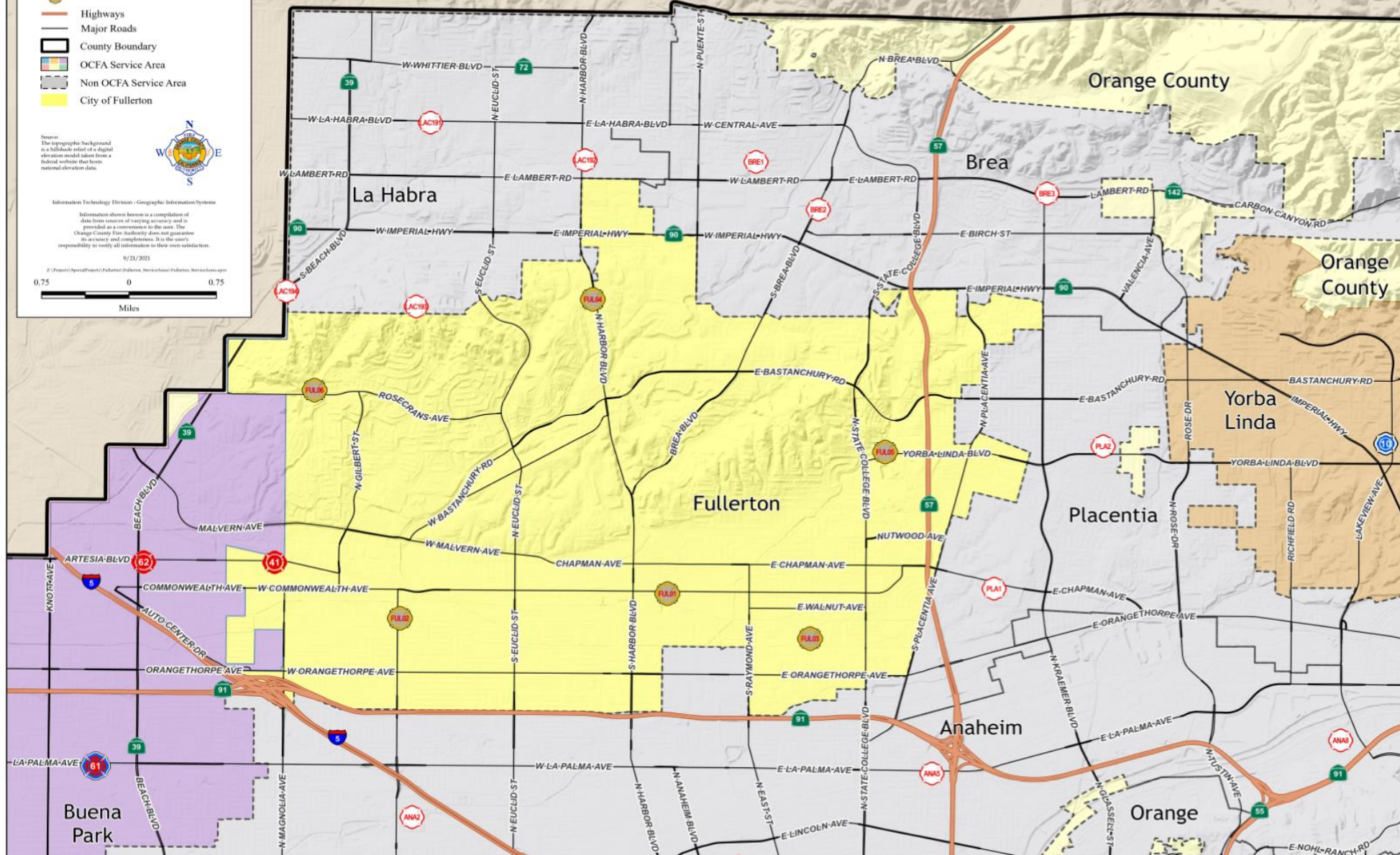


Information Technology Division - Geographic Information Systems

Information shown herein is a compilation of data from sources of varying accuracy and is provided as a convenience to the user. The Orange County Fire Authority does not guarantee its accuracy and completeness. It is the user's responsibility to verify all information to their own satisfaction.

8/21/2021

0.75 0 0.75
Miles



Proposal Cost to Fullerton

OCFA Proposal Cost Budget Comparison with annual increases

	2021/22	2022/23	2023/24	2024/25
OCFA Service Charge (A)	\$21,509,990	\$22,477,939	\$23,489,447	\$24,546,472
OCFA % Inc. Maximum		4.50%	4.50%	4.50%
2018/19 FFD Budget Total (B)	\$27,307,520	\$29,183,547	\$31,188,456	\$33,331,103
% Increase	8.26%	6.87%	6.87%	6.87%
Annual Savings (B-A)	\$5,797,530	\$6,705,607	\$7,699,010	\$8,784,632
Cumulative Savings		\$28,986,779		

Summary of Start-Up costs	
Communications	\$404,650
Facilities	\$152,700
Personnel	\$167,880
Service Center	\$394,080
Fleet Services	\$114,520
EMS	\$357,848
Total	\$1,591,678

Note: Excludes one-time startup costs and City's Annual UAAL Payment to PERS.

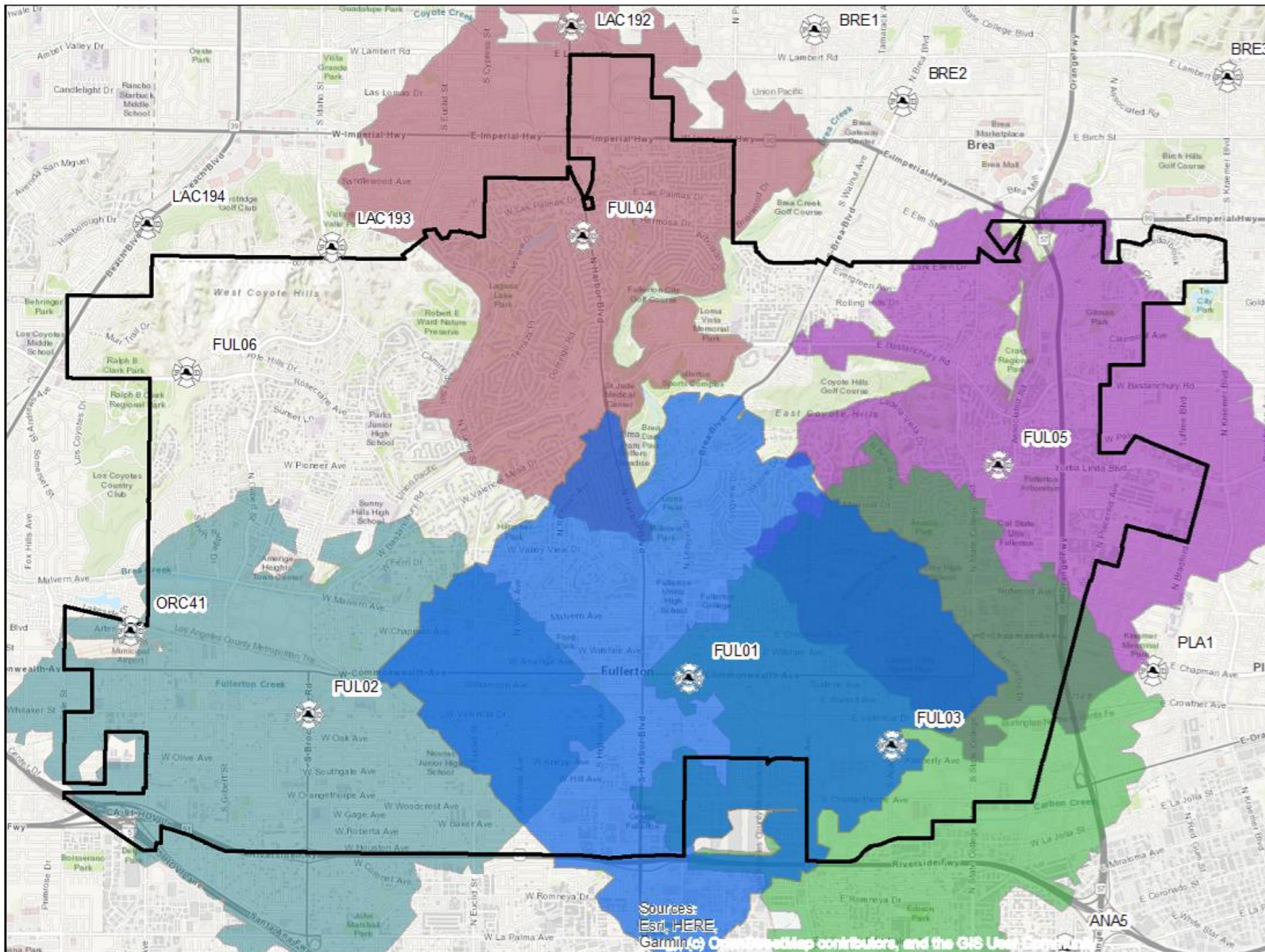
Deployment Comparison





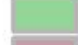


OCFA Proposal comparison with current Fullerton deployment

	Station 1	Station 2	Station 3	Station 4	Station 5	Station 6	Daily Staffing	Daily Medics
Fullerton Current Deployment	PME/BC	PME	PME	PME	PME	BLS Truck	25	10
OCFA Deployment	PME/BC	PME	PMT	PME	PME	PMT	25	12

1. PME = Paramedic Engine, PMT = Paramedic Truck
2. Indicates conversion to **ALS** capability
3. Indicates the conversion to **Paramedic Truck**

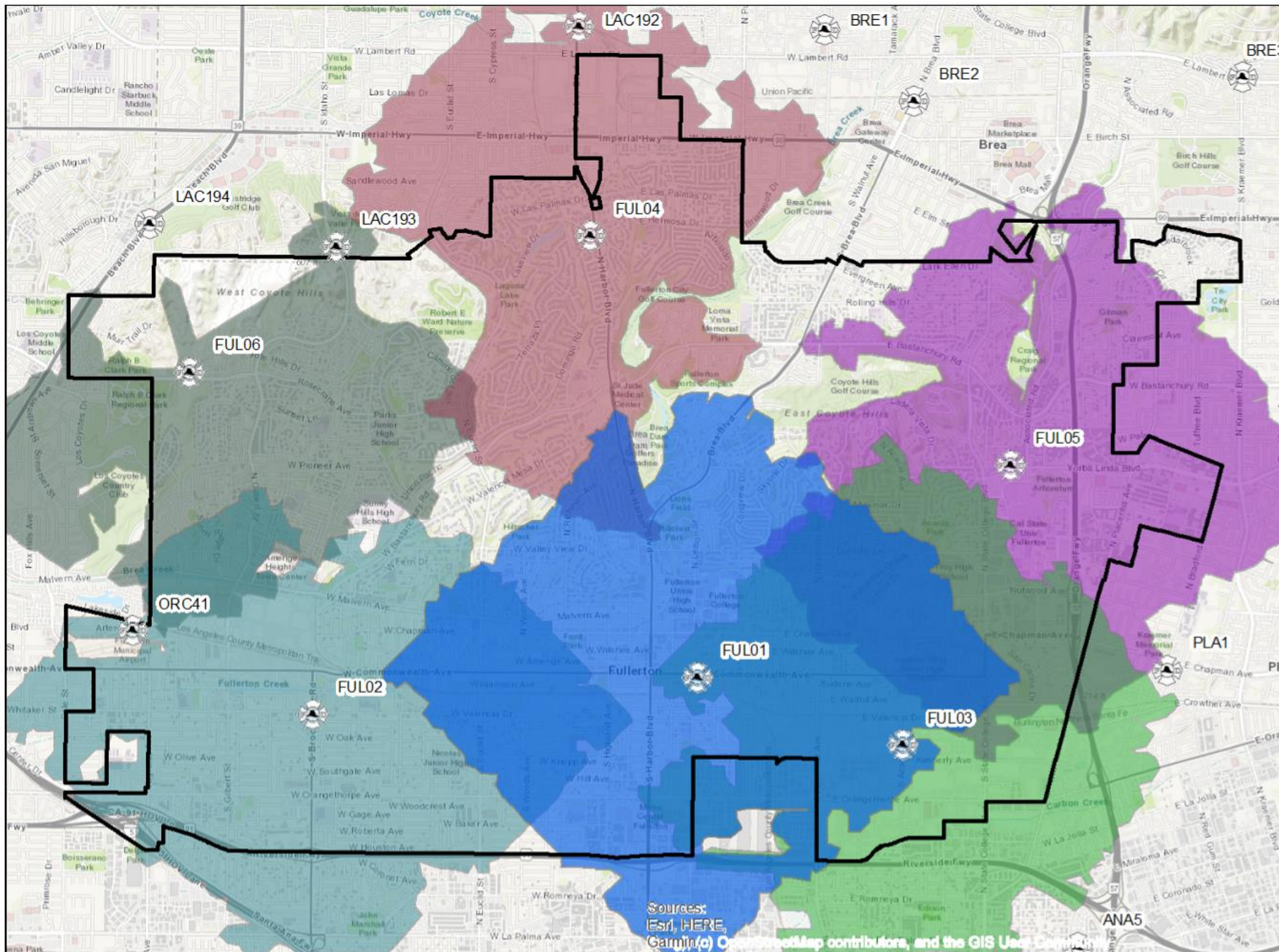
Current Paramedic Response (5 minute)



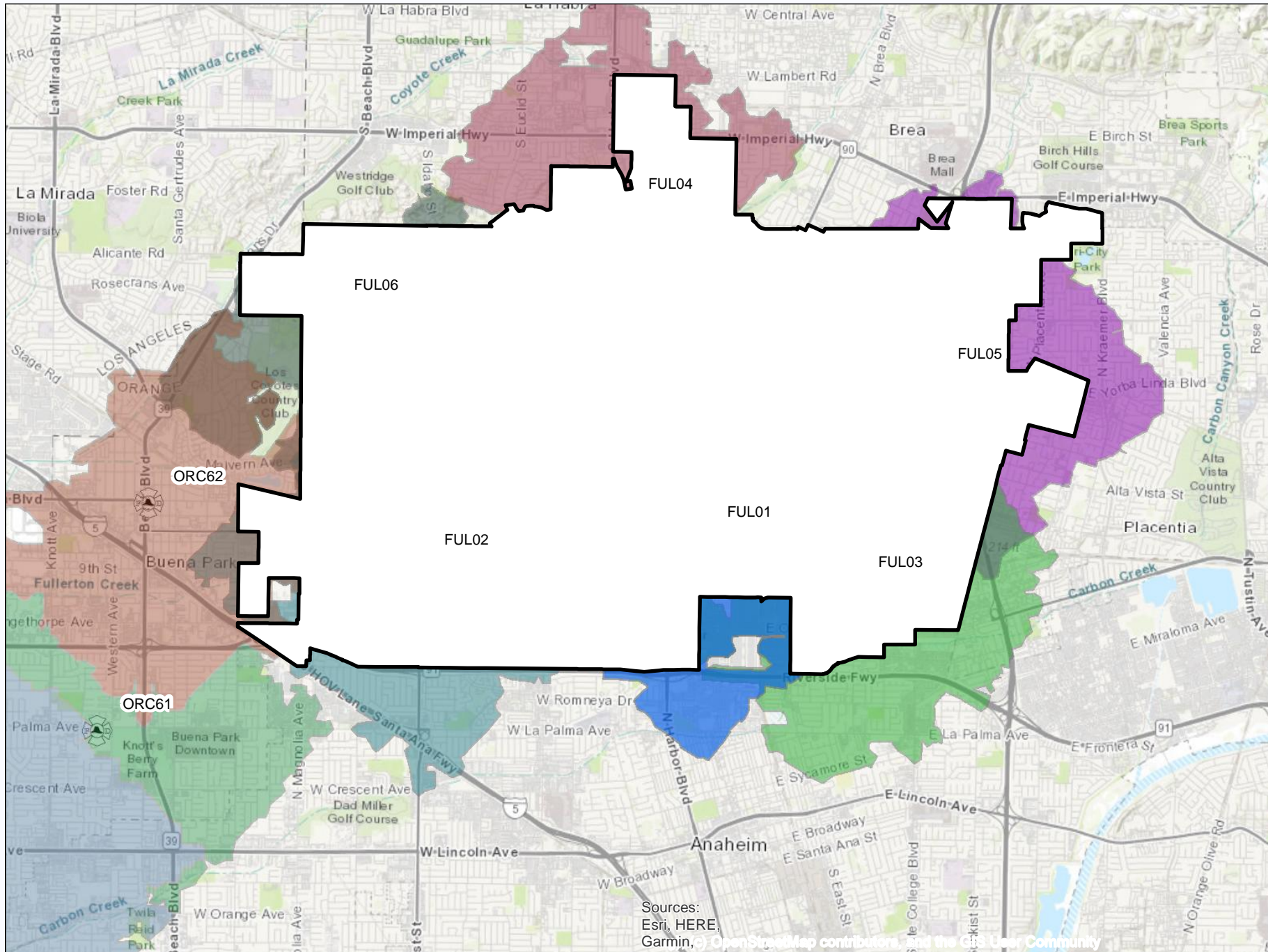
- Legend**
-  Fire Stations
 -  City Boundary
 -  PME1 - 5 Min Travel
 -  PME2 - 5 Min Travel
 -  PME3 - 5 Min Travel
 -  PME4 - 5 Min Travel
 -  PME5 - 5 Min Travel

Sources: Esri, HERE, Garmin, © OpenStreetMap contributors, and the GIS User Community

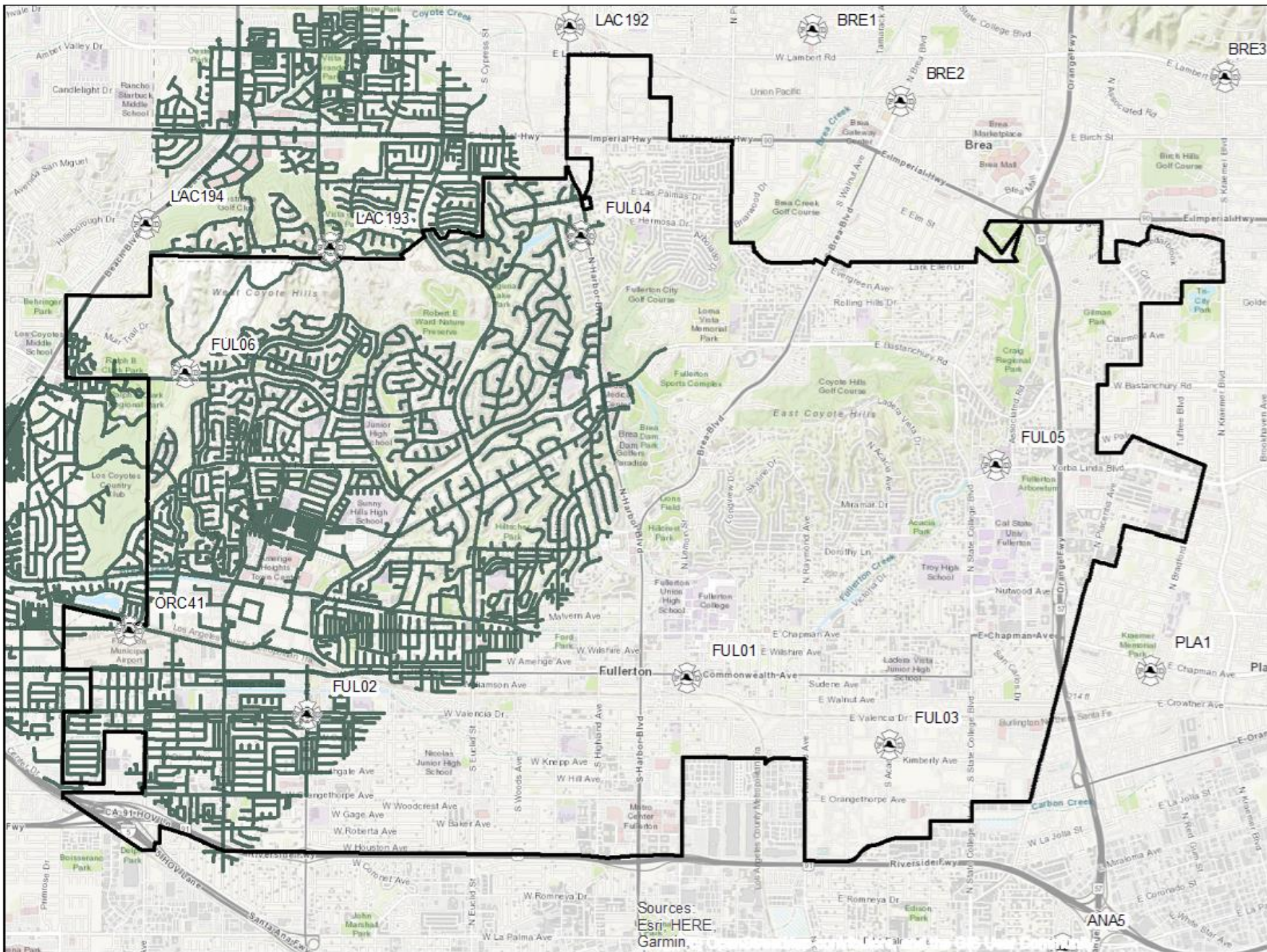
Proposed Paramedic Responses (5 minute)



Regional Paramedic Response with OCFA (5 minute)



Current Ladder Truck Response (9 minute)



Legend

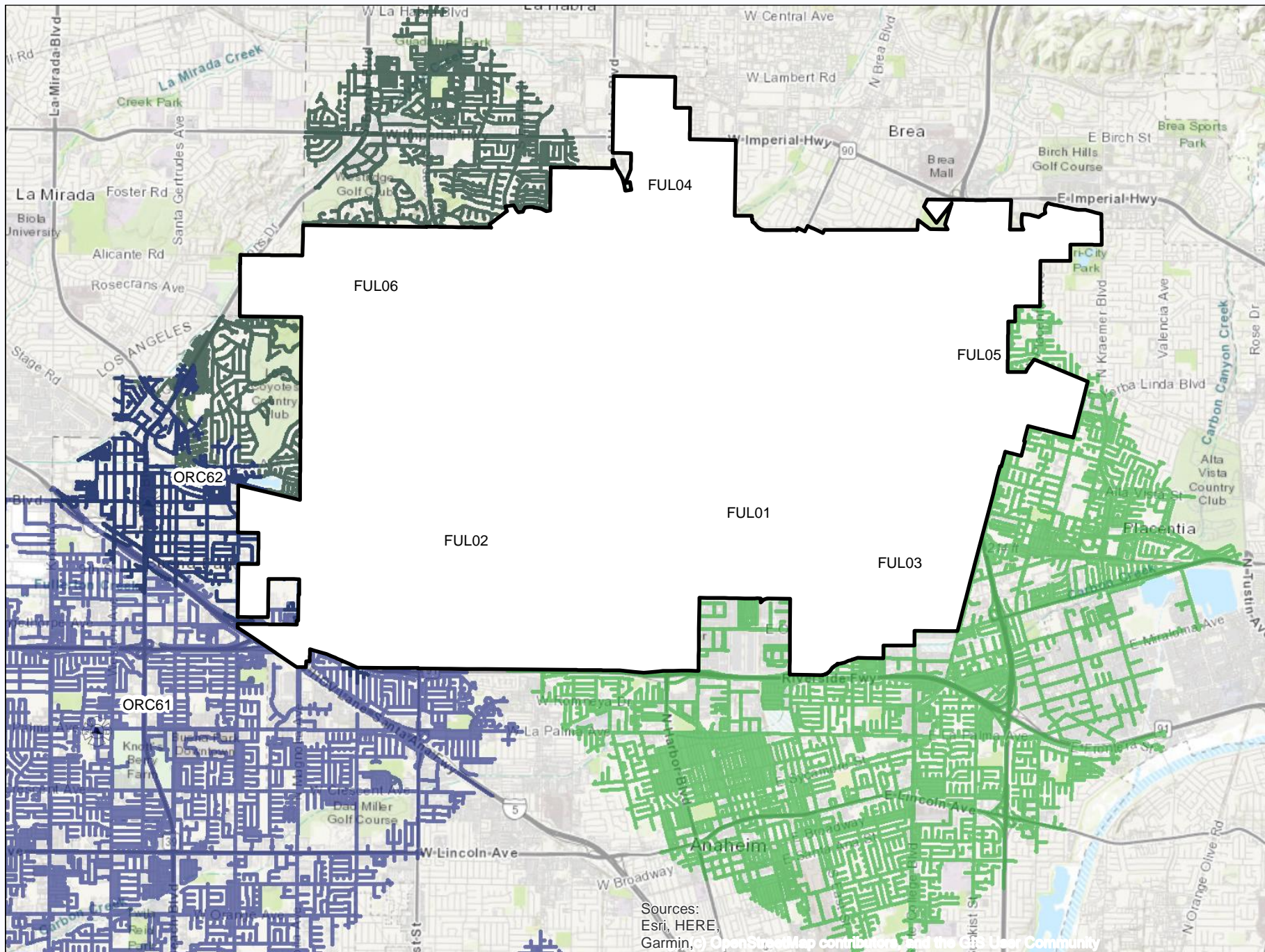
 Fire Stations

 City Boundary

 T6 - 9 Min Travel

Sources:
Esri, HERE,
Garmin.

Regional Ladder Truck Response with OCFA (9 minute)

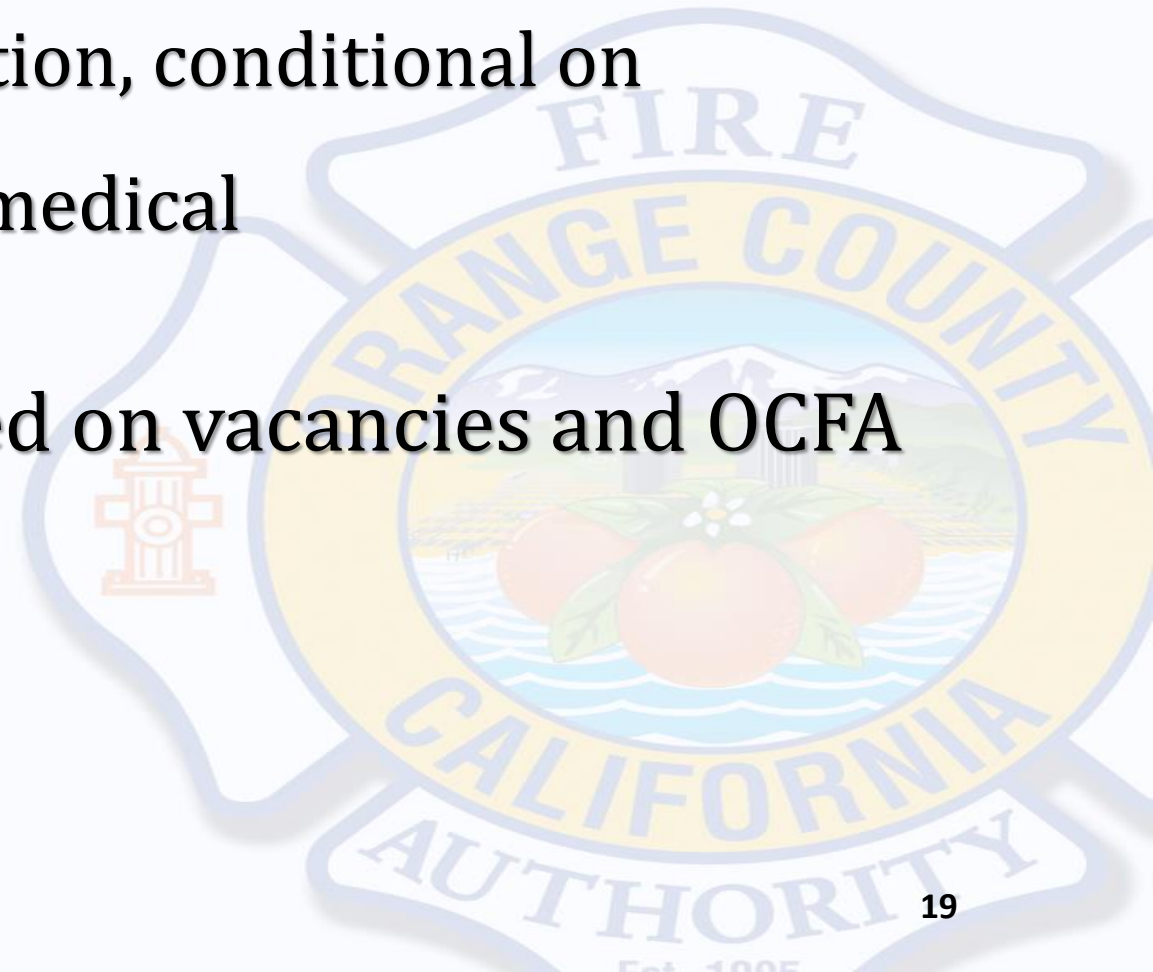


Sources:
Esri, HERE,
Garmin, © OpenStreetMap contributors, and the GIS User Community



Personnel/Transition

- Minimum 120 day timeline
- All FFD sworn employees to transition, conditional on background and pre-employment medical
- Non-sworn personnel hired based on vacancies and OCFA needs



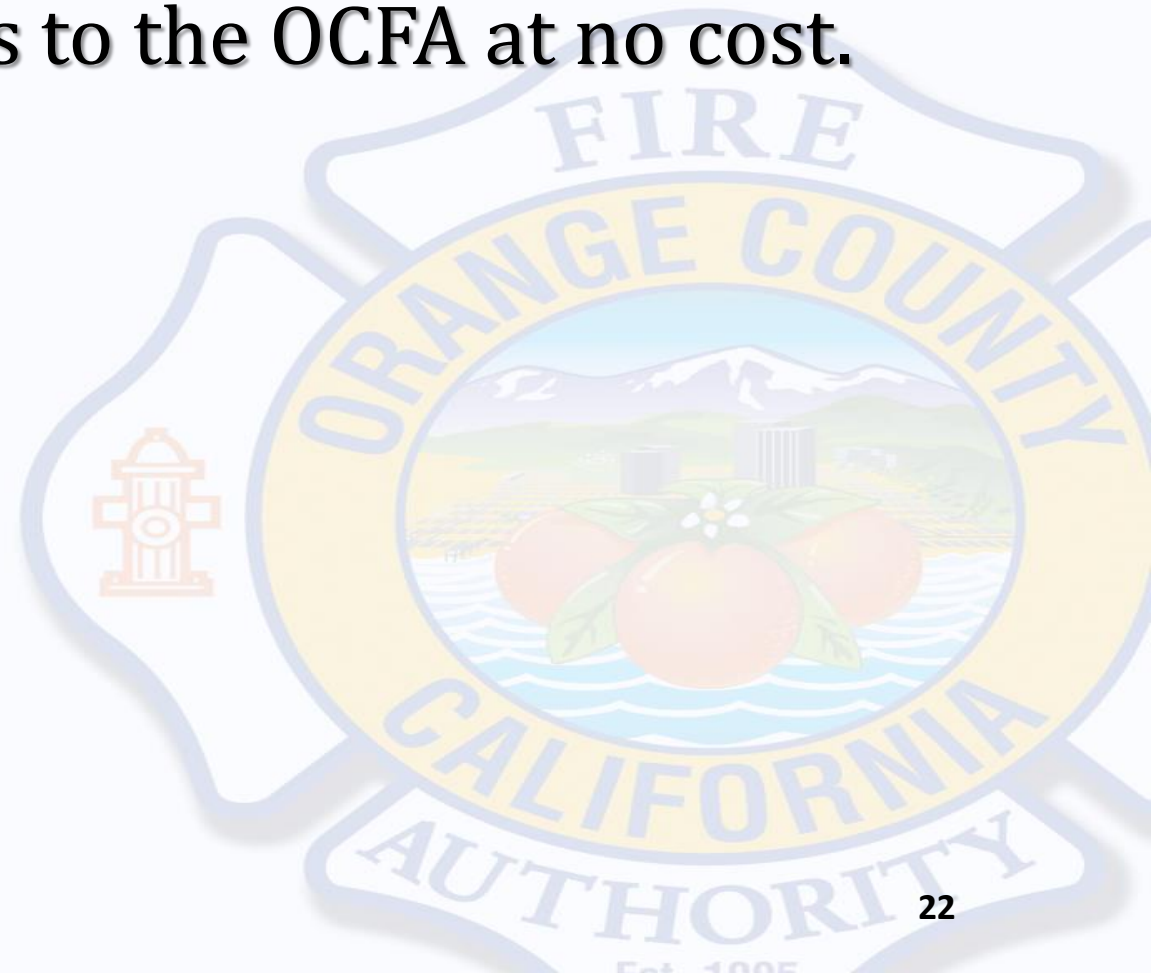
Facilities

- Ownership of fire stations remain with City of Fullerton
- Expenses divided into 3 categories:
 - Start up costs -\$152,700
 - Yearly Maintenance
 - \$15,000 per station for a total of \$90,000 is in the contract cost – detail in FSP
 - Capital Improvements
 - Project costs that exceed \$15,000



Apparatus

Proposal specifies that the City will lease all current fire department vehicles and apparatus to the OCFA at no cost.

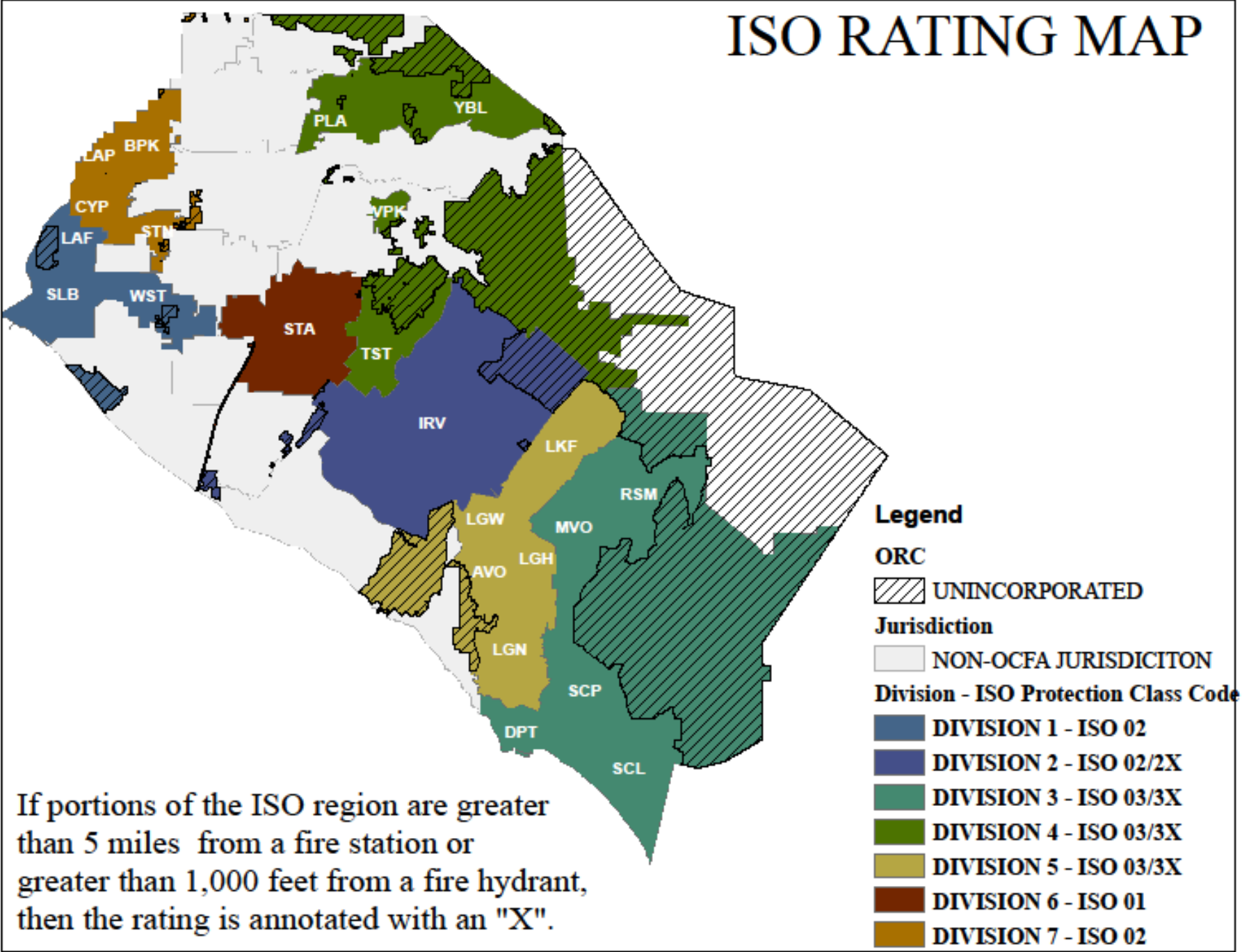


Questions ?





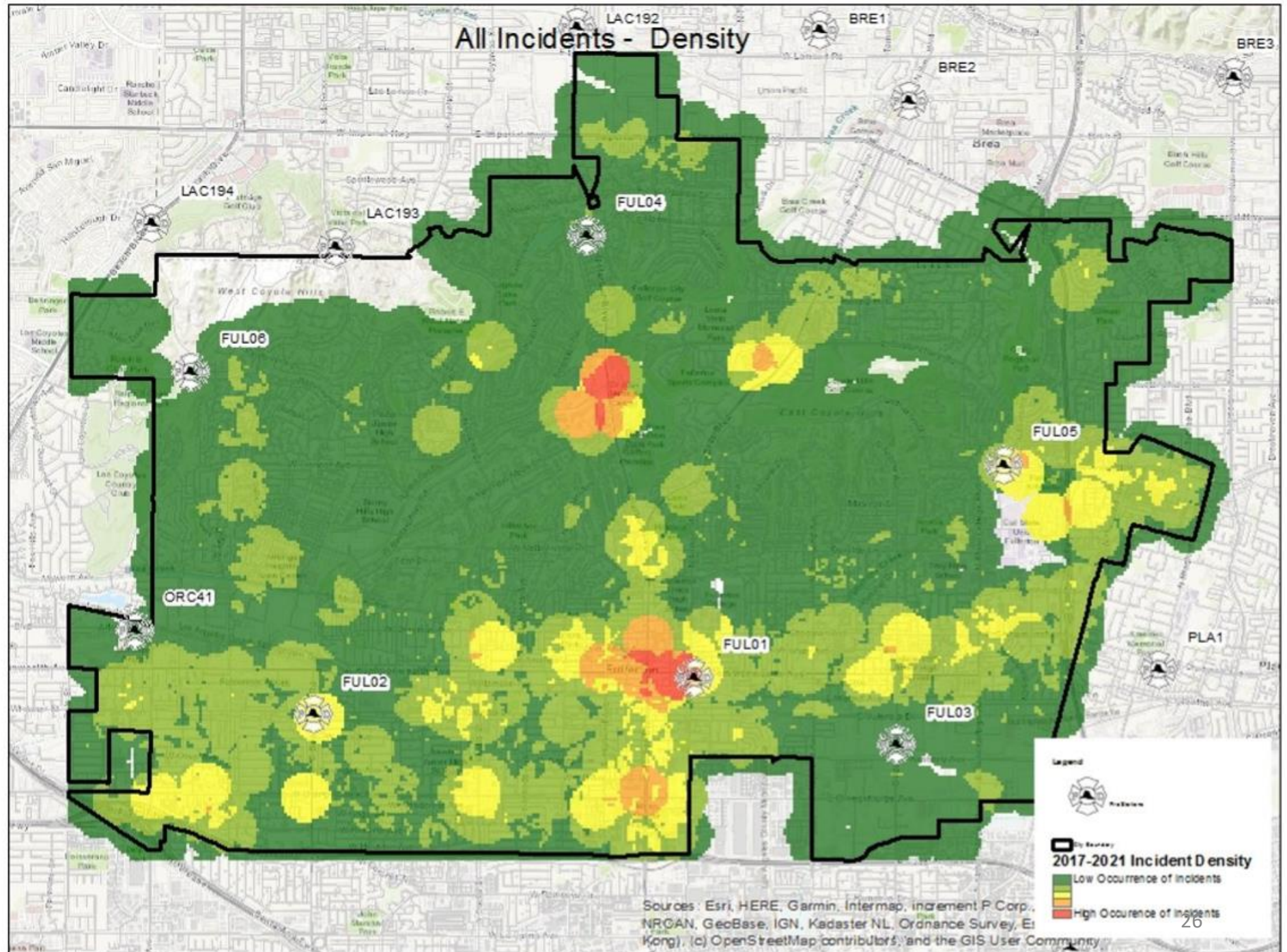
ISO RATING MAP



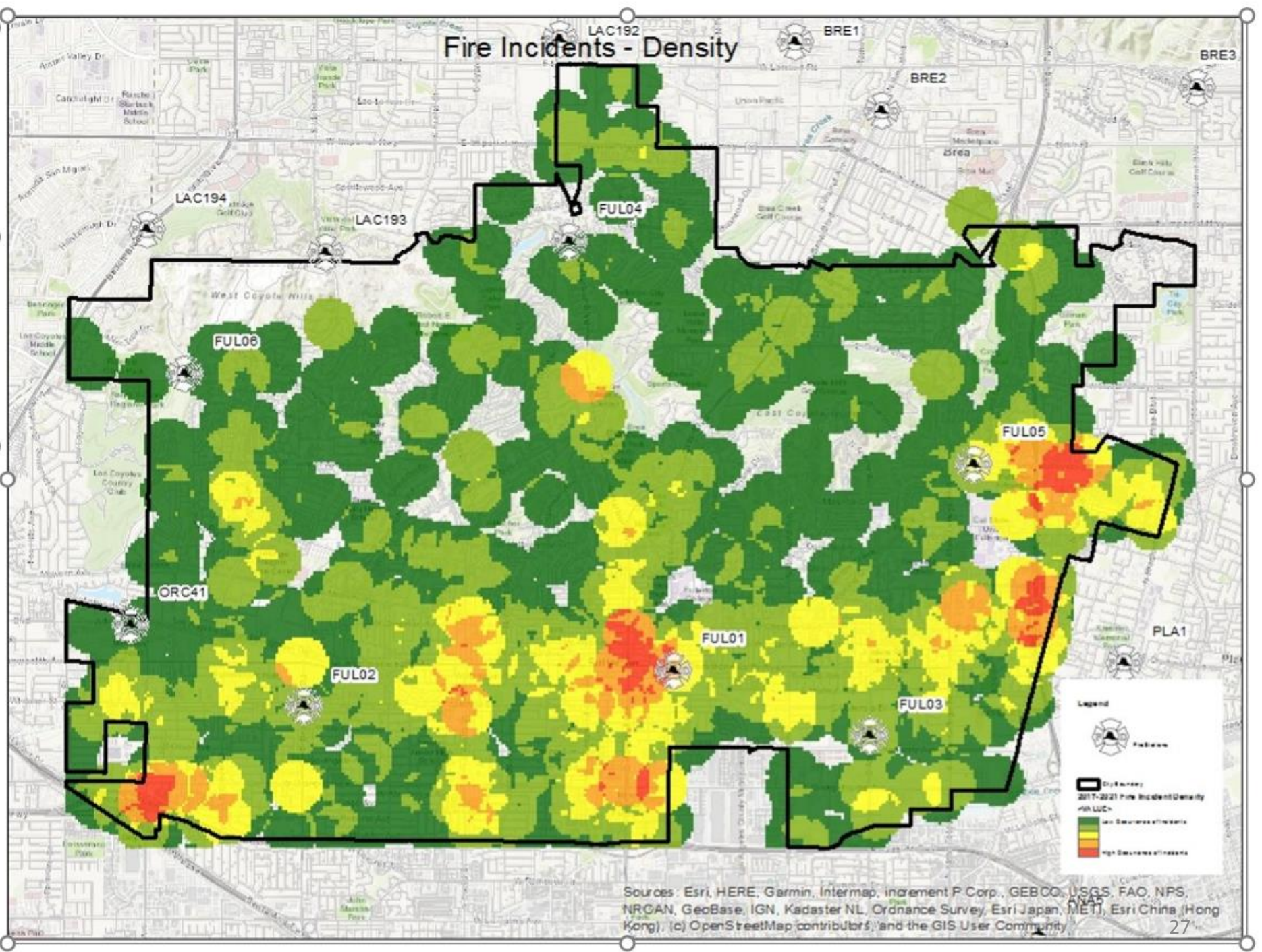
If portions of the ISO region are greater than 5 miles from a fire station or greater than 1,000 feet from a fire hydrant, then the rating is annotated with an "X".



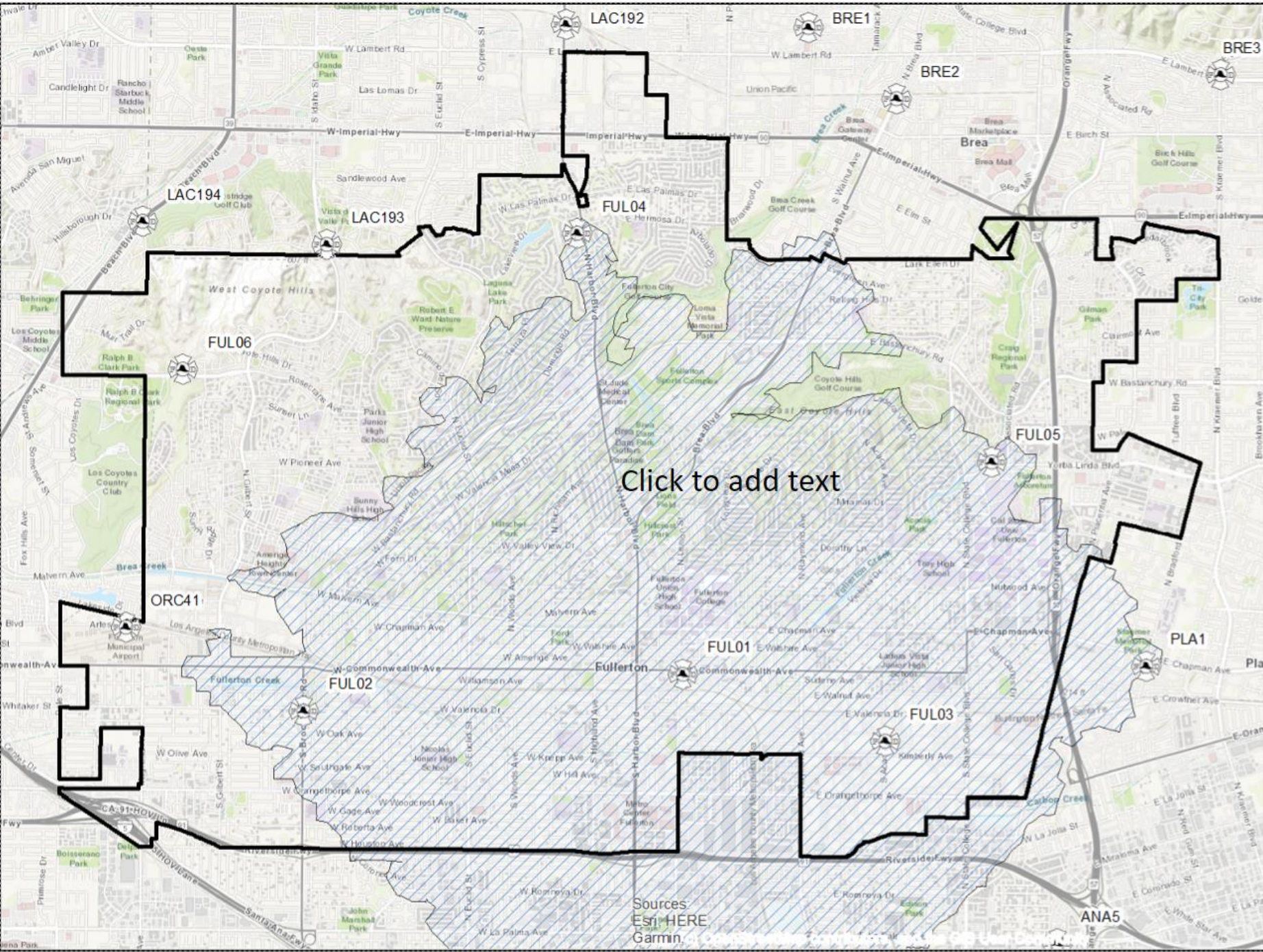
Years	Incidents
2017	12,690
2018	12,606
2019	13,031
2020	12,376
2021	5,243
Total	55,946



Years	Incidents
2017	321
2018	306
2019	302
2020	373
2021	163
Total	1,465



Battalion Coverage (9 Min.)



Click to add text

Legend



Fire Stations



City Boundary



BC(FS1) - 9 Min Travel

Sources: Esri, HERE, Garmin